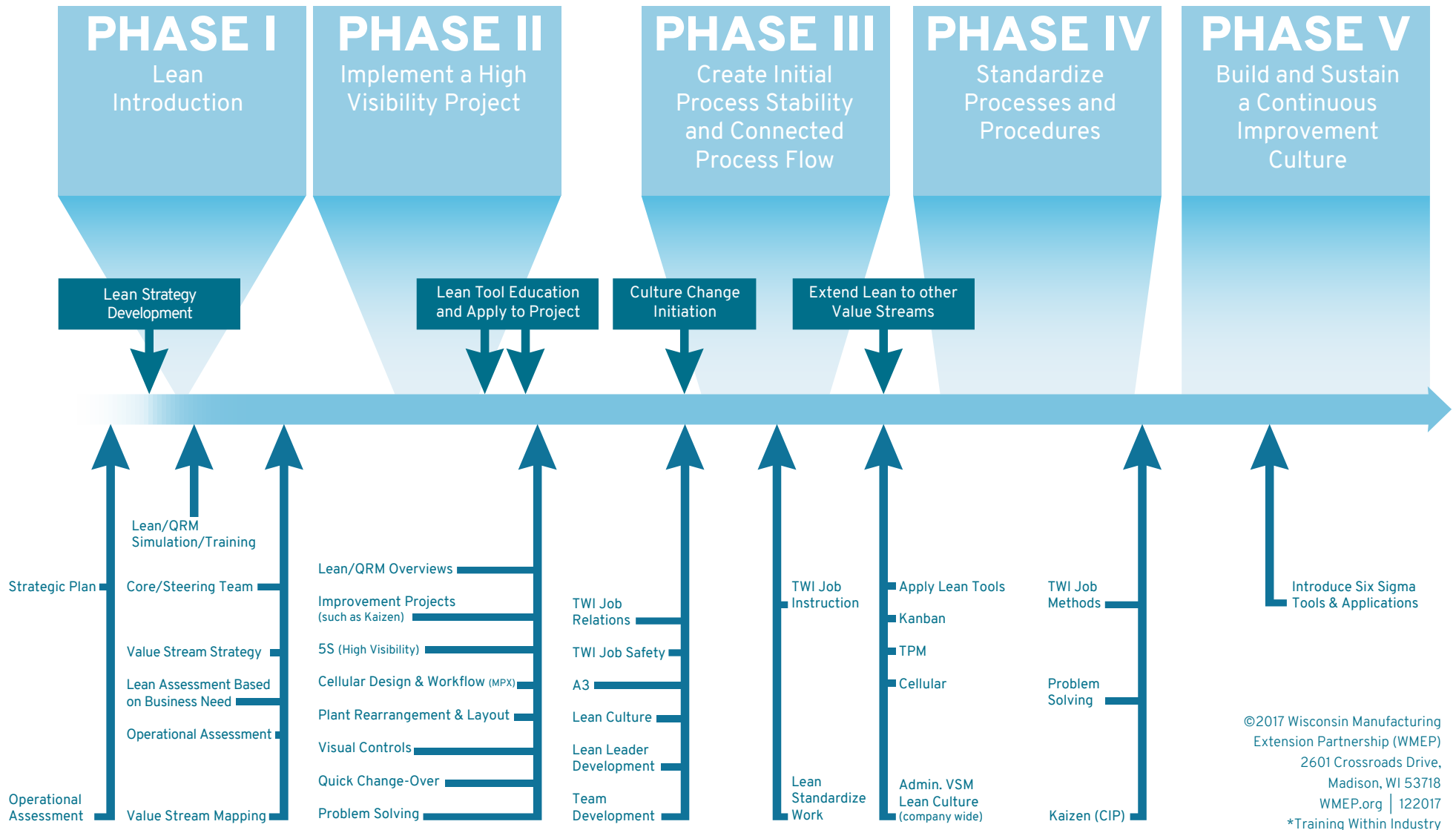
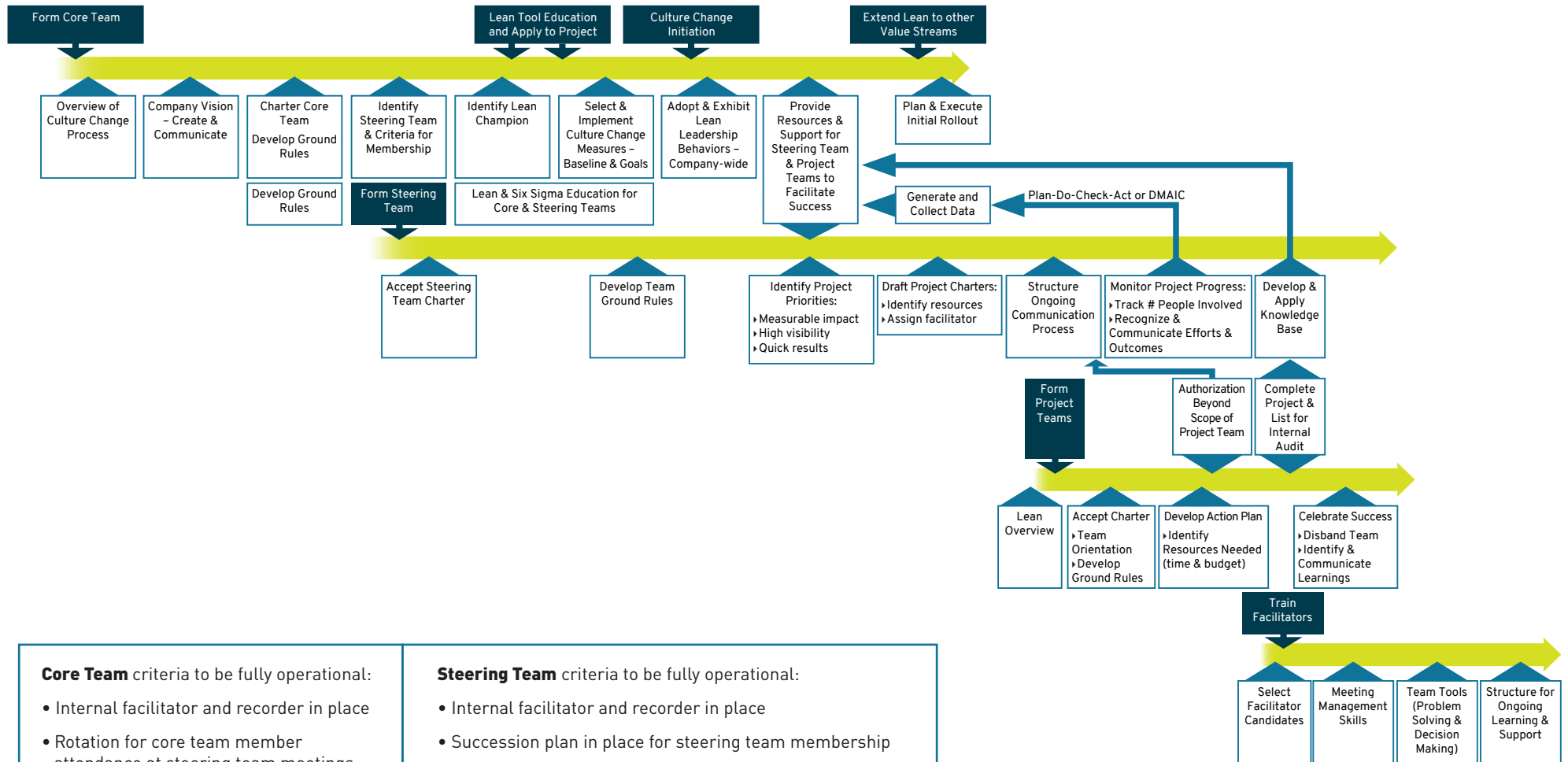


The Lean Transformation Journey to Continuous Improvement



Lean Transformation Culture Process Flow



Core Team criteria to be fully operational:

- Internal facilitator and recorder in place
- Rotation for core team member attendance at steering team meetings
- Measures integrated with operations at all levels
- Integrate effective leader behaviors into all levels of the organization
- Assure success of steering team through timely decision-making

Steering Team criteria to be fully operational:

- Internal facilitator and recorder in place
- Succession plan in place for steering team membership
- Routinely chartering and completing projects
- System in place for monitoring project results
- Designated areas throughout the organization to communicate progress and employee involvement
- Structured program for recognizing employee involvement
- Ongoing recruitment and training of facilitators as needed

